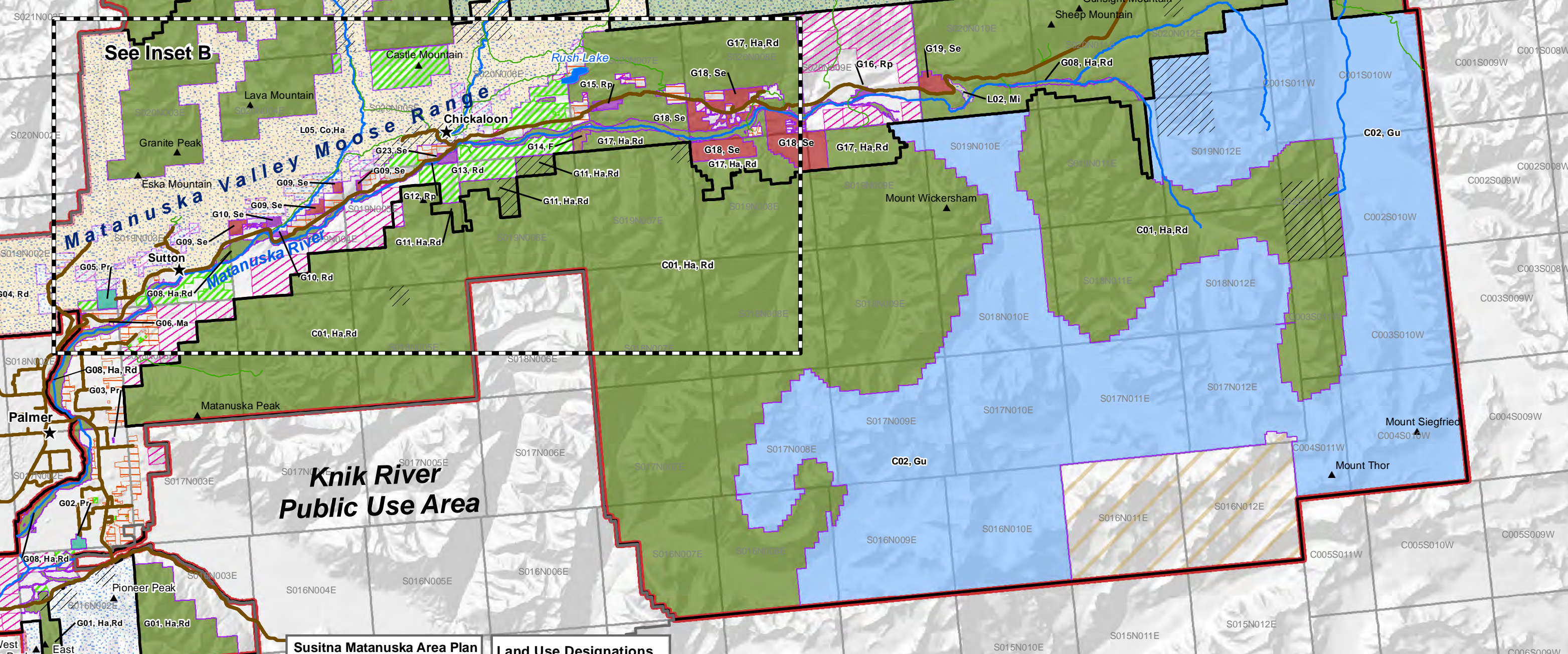
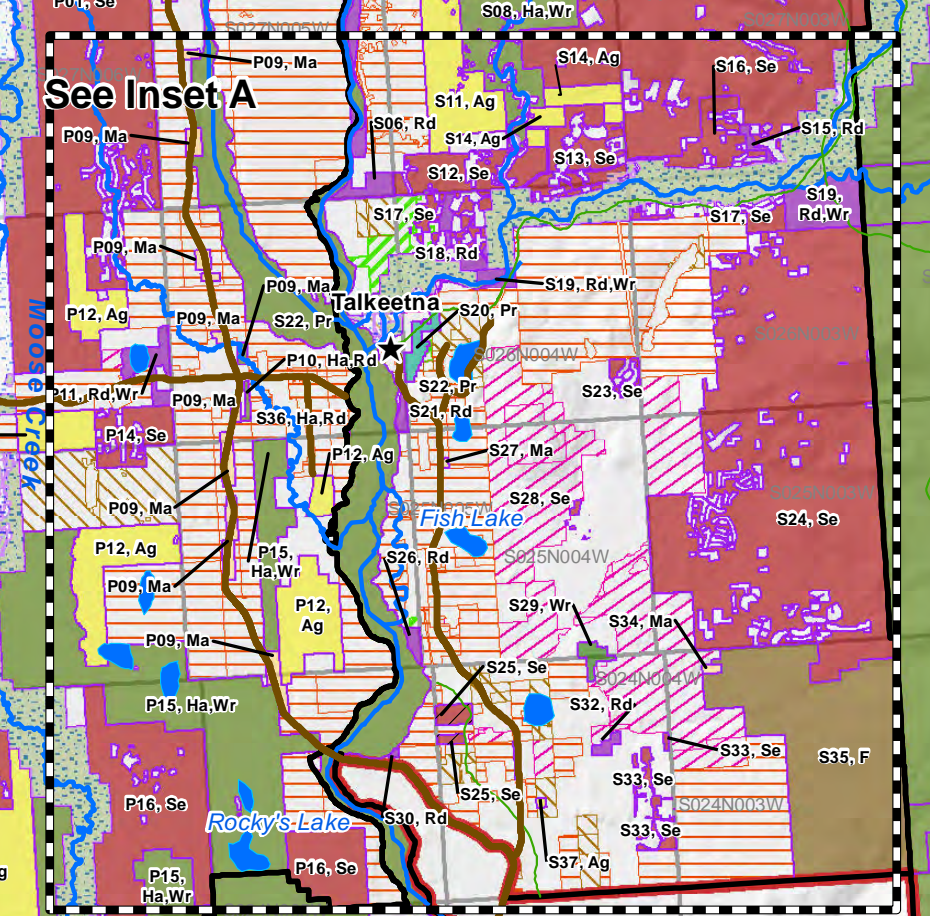
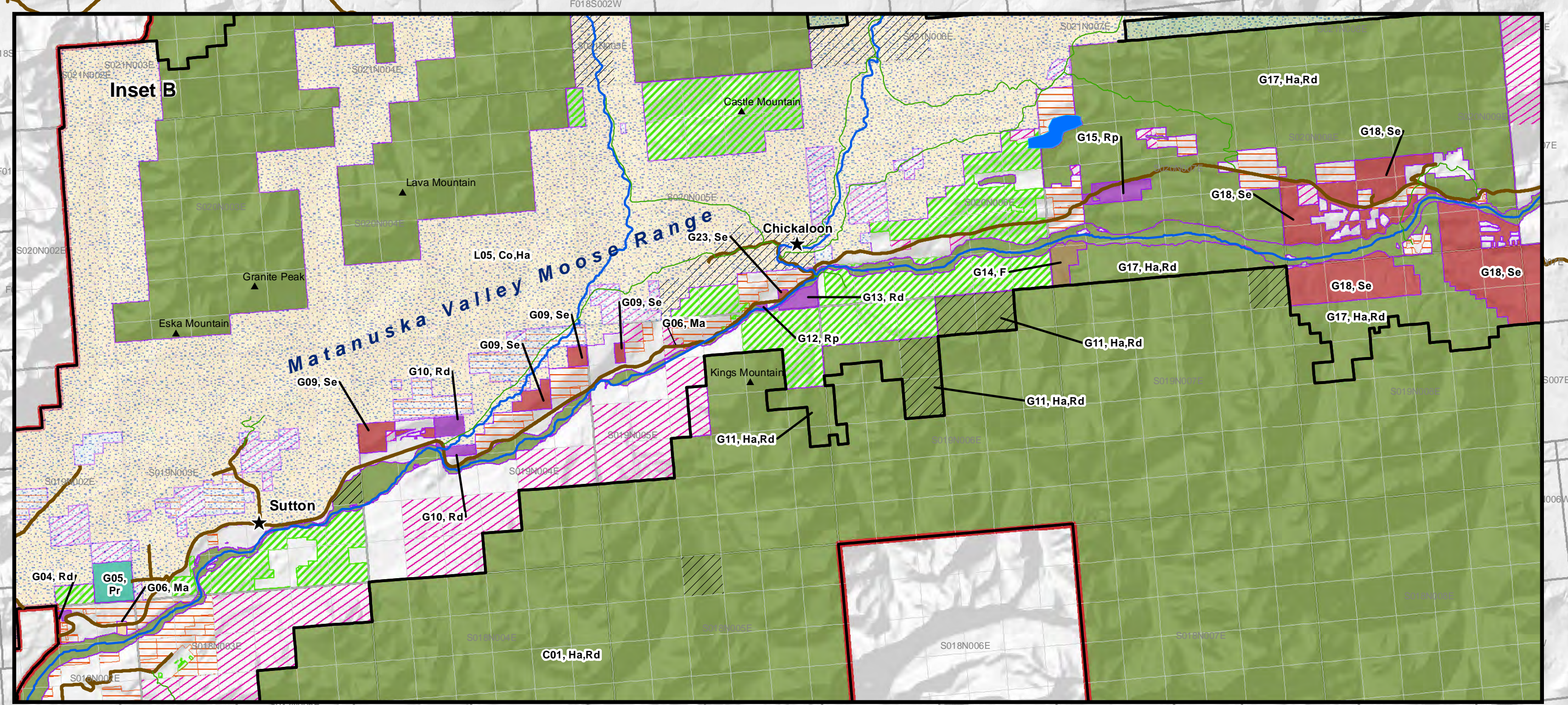
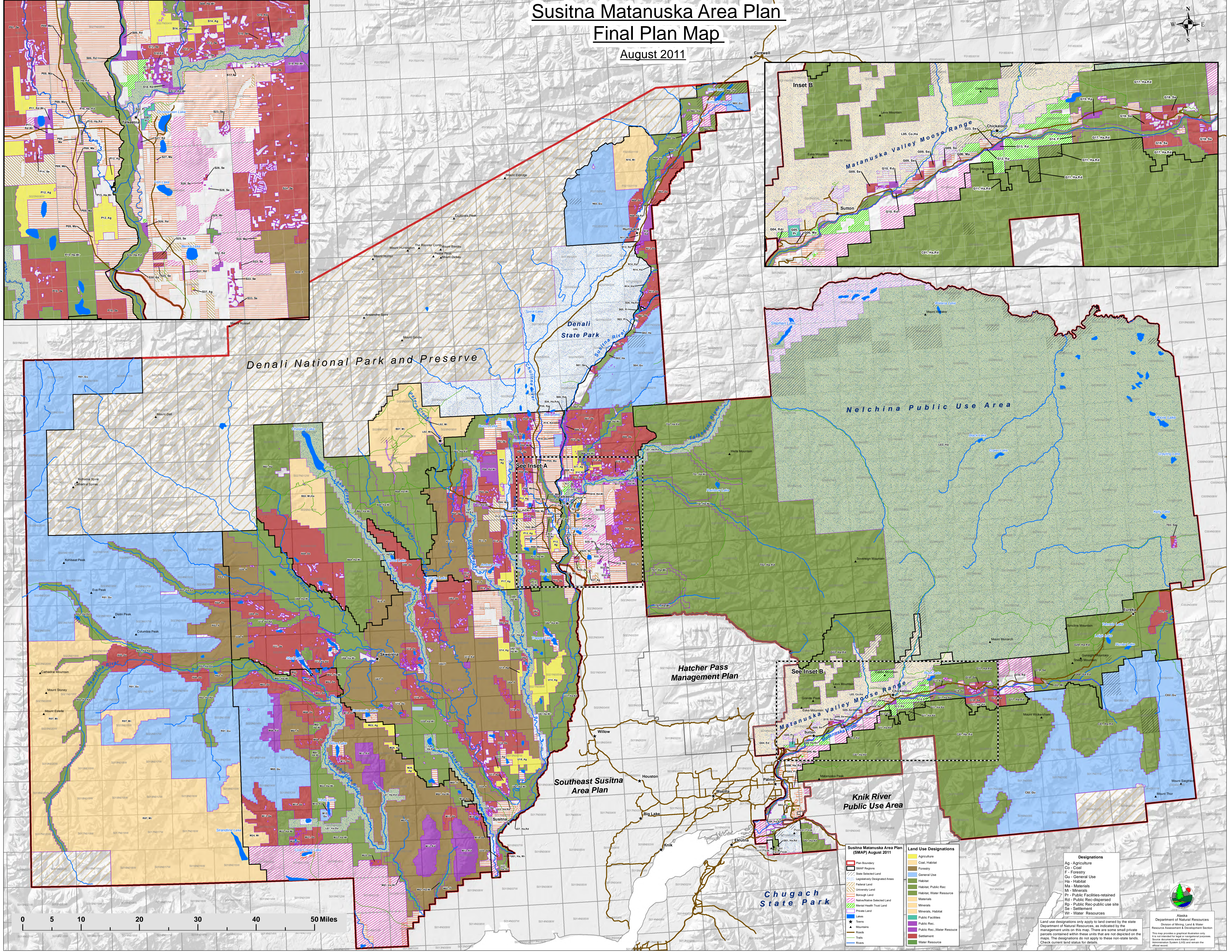
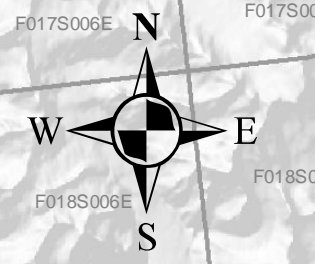


Susitna Matanuska Area Plan Final Plan Map

August 2011



Susitna Matanuska Area Plan (SMAP) August 2011

[Red outline]	Plan Boundary	[Yellow]	Agriculture
[Blue outline]	State Selected Land	[Green]	Coastal Habitat
[Orange outline]	Legislatively Designated Areas	[Light Green]	Forestry
[Blue hatched]	Federal Land	[Light Blue]	General Use
[Green hatched]	State Land	[Dark Green]	Habitat
[Purple hatched]	Borough Land	[Light Green]	Habitat, Public Rec
[Pink hatched]	Native/State Selected Land	[Light Green]	Habitat, Water Resource
[Blue hatched]	Private Land	[Light Green]	Materials
[Blue star]	Towns	[Light Green]	Minerals, Habitat
[Blue triangle]	Mountains	[Light Green]	Public Rec.
[Blue line]	Roads	[Light Green]	Public Rec., Water Resource
[Blue dashed line]	Trails	[Light Green]	Settlement
[Blue wavy line]	Rivers	[Light Green]	Water Resource

Designations

Ag	- Agriculture
Cd	- Coastal
F	- Forestry
Gu	- General Use
Ha	- Habitat
Ma	- Materials
Pr	- Public Facilities-retained
Rd	- Public Rec-dispersed
Rp	- Public Rec-public use site
Se	- Settlement
Wr	- Water Resources

Land use designations only apply to land owned by the state Department of Natural Resources, as indicated by the management units on this map. There are some small private parcels contained within these units that are not depicted on the maps. The designations do not apply to these non-state lands. Check current land status for details.

